

ATEN Unizon

Global AV Management Platform



Your Power to Monitor, Control, Manage

ATEN Unizon™ is a server-based software for AV and IT professionals to centrally monitor, control, and manage ATEN Modular Matrix and third-party devices connected to the ATEN Control System Controllers anytime, anywhere.

[GET FREE TRIAL!](#)



Device Condition Monitoring

Real-time monitoring and tracking of device condition for troubleshooting and maintenance.

Condition Detection

Automatically detects device power status, temperature, fan, and connection status, helping you perform maintenance to avoid potential device failures.

R302

Add Device ▼
Refresh

VM1600A
Actions
Upgrade
🗑️

		Device	Health	Connection	Power Supply	Power Status	Fan	Temperature
<input type="checkbox"/>	1st	R409 ✖️🌀	⚠️	●	●	●	●	●
<input type="checkbox"/>	1st	QAtest-1 ✖️🌀	—	●	—	—	—	—

More

VM6404H
Actions
Upgrade
🗑️

		Device	Health	Connection	Temperature	Fan	IP Address
<input type="checkbox"/>	1st	33333_Louis VM6404H ✖️🌀	⚠️	●	—	—	10.3.52.109
<input type="checkbox"/>	1st	VM6404H ✖️🌀	⚠️	●	—	—	10.3.52.209

More

94 Hi, 123456

Add Device ▼
Refresh

Upgrade
🗑️

Device	Health	Connection	Temperature	Fan
M6404H	✔️	●	●	●
M6404Herewr	✔️	●	●	●

Upgrade
🗑️

Device	Health	Connection	Power Supply	Power Status	Fan
M1600A	⚠️	●	-	-	-
Atest-1	-	●	-	-	-

Logs / Notifications
Remove All

- Device removed**
The user admin was una...
Control Center > AIEN China
2019-04-15 18:05:31

🗑️
➔
- Device removed**
The user admin was una...
Control Center > AIEN China
2019-04-15 17:57:35

🗑️
➔
- Location added**
The user admin has adde...
2019-04-15 17:54:23

🗑️
➔
- Location added**
The user admin has adde...
2019-04-15 17:54:15

🗑️
➔
- Location added**
The user admin has adde...

🗑️
➔

Alerts and Notifications

Instantly get notified of device abnormalities to perform troubleshooting actions and reduce down-time.

System Log

Device usage and abnormal events are recorded so you can analyze past usability and plan future optimization.

Time	Category	Severity	Event	Description
2019-04-14 08:31:57	Device trap	Information	Device name synchronized	The name for de fully.
2019-04-14 08:31:57	Device trap	Information	Device name synchronized	The name for de fully.
2019-04-14 08:31:57	Device trap	Information	Device name synchronized	The name for de fully.
2019-04-14 00:00:00	System Task	Warning	Unable to start schedule	The server was t
2019-04-14 00:00:00	System Task	Warning	Unable to start schedule	The server was t
2019-04-14 00:00:00	System Task	Warning	Unable to start schedule	The server was t
2019-04-13 08:32:10	Device trap	Information	Device name synchronized	The name for de d successfully.
2019-04-13 08:32:10	Device trap	Information	Device name synchronized	The name for de d successfully.
2019-04-13 08:32:08	Device trap	Information	Device name synchronized	The name for de fully.
2019-04-13 08:32:08	Device trap	Information	Device name synchronized	The name for de fully.



Global Control and Scheduling

Perform and schedule routine tasks and firmware upgrades across multiple devices simultaneously.

Device Group Control

Execute actions instantly across multiple devices simultaneously, such as switching ports, profiles, resolutions, and video off.



Event Scheduling

Schedule routine tasks for devices to carry out, such as setting different video contents to display at specific times of the day or week.

Schedule +

- Event 1
- Event 2
- Event 3
- Event 4 ...

weekly v
At 00:00 Sunday,00:...
 from

Select Device i

VM6404H v

Location d	Room d	Device
Cc ATEN ▶	R302	VM6404
Control ▶	ATEN China	VM6404
Control ▶	ATEN China	VM6404

VM6404H

Actions

↑ Upgrade

🗑️

		Device d
<input type="checkbox"/>	1st	VM6404H ✖️ 🌐
<input type="checkbox"/>	1st	VM6404Herewr ✖️ 🌐

More

Firmware Upgrade

Remotely update the firmware of multiple devices simultaneously directly through the platform, saving you time and maximizing productivity.

Contact Us

Get a quote for this product or get in touch with our sales experts

[Get Quote](#)

[Contact Sales](#)

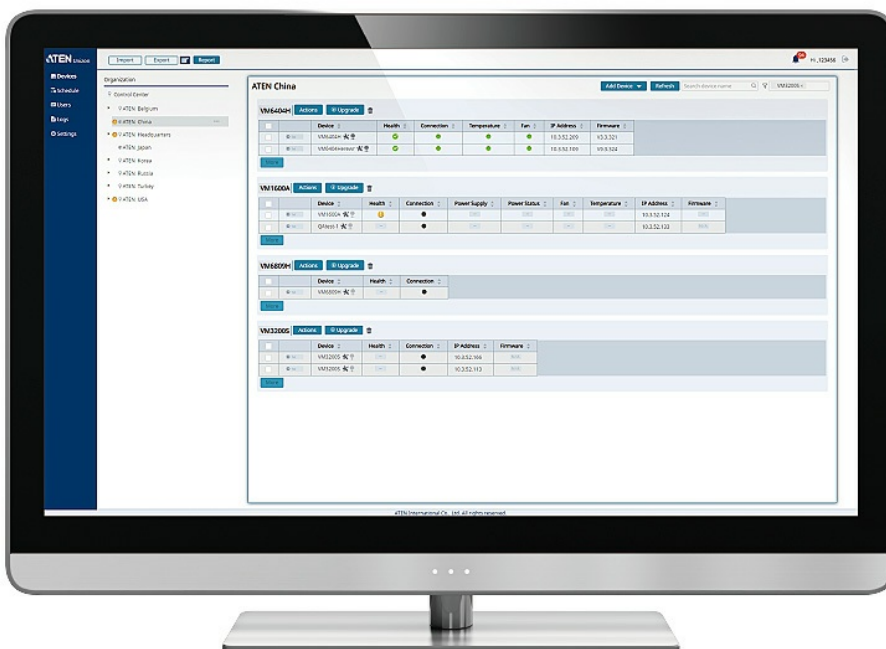


Access and Location Management

Set user access levels and manage devices by room, floor, building, or even by city.

Device Location Tree

Easily navigate the location of devices on the 5-level location tree by drilling down by room, floor, building, or even city.



Floor View

View devices across different buildings / floors grouped by device.

Import Export Report

Organization

- Control Center
- ATEN Belgium
- ATEN China
- ATEN Headqua...
- ATEN Japan
- ATEN Korea
- ATEN Russia
- ATEN Turkey
- ATEN USA

ATEN USA Organiz... Search organization n

VM6404H VM3200 VM3200S **VM1600A** VK2100 VK1100 VM6809H

		VM1600A	Actions				
Location	Room	Device	Health	Connection	Power Sup...	Power Stat...	Fan
Cc ATEN U ▶	R302 ▶	R409					
		QAtest-1	---		---	---	---
Cc AT R3 12 1234 ▶	R305 ▶	R409					
Cc AT R301 ▶	R305 ▶						

[More](#)

Import Export Report

Organization

- Control Center
- ATEN Belgium
- ATEN China
- ATEN Headqua...
- ATEN Japan
- ATEN Korea

R302 [Add Device](#)

VM1600A [Actions](#) [Upgrade](#)

<input type="checkbox"/>		Device	Health	Connection	Power
<input type="checkbox"/>	1st	R409			
<input type="checkbox"/>	1st	QAtest-1	---		

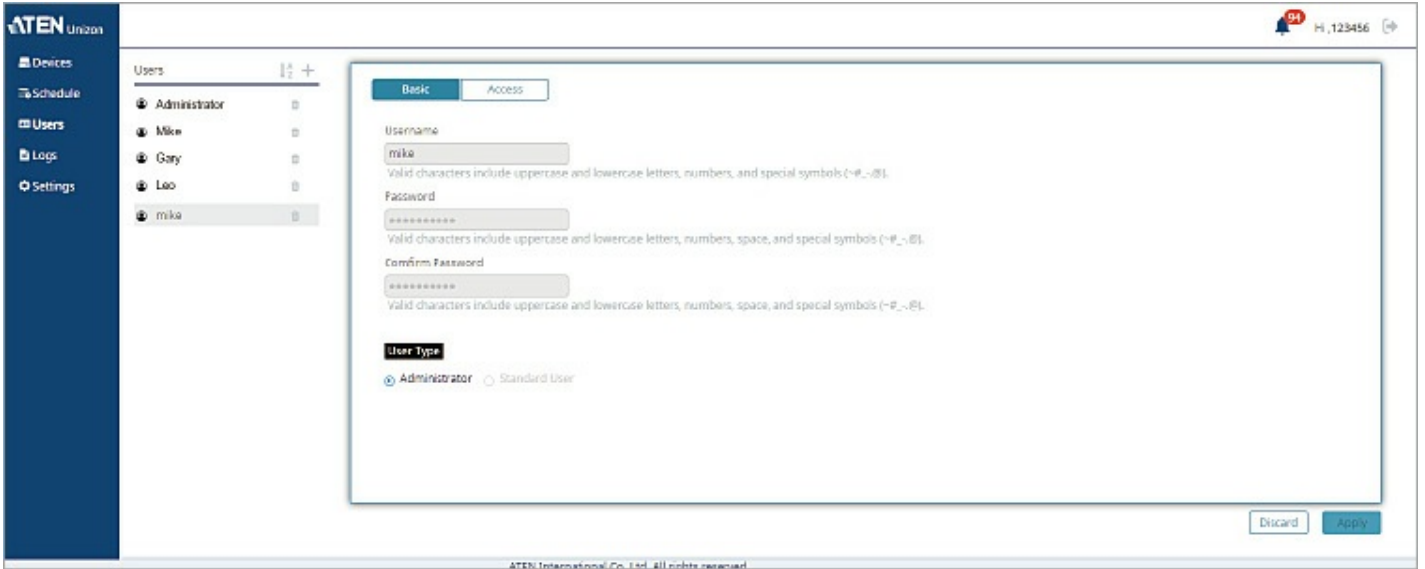
[More](#)

Room View

View information for individual devices located in a single room.

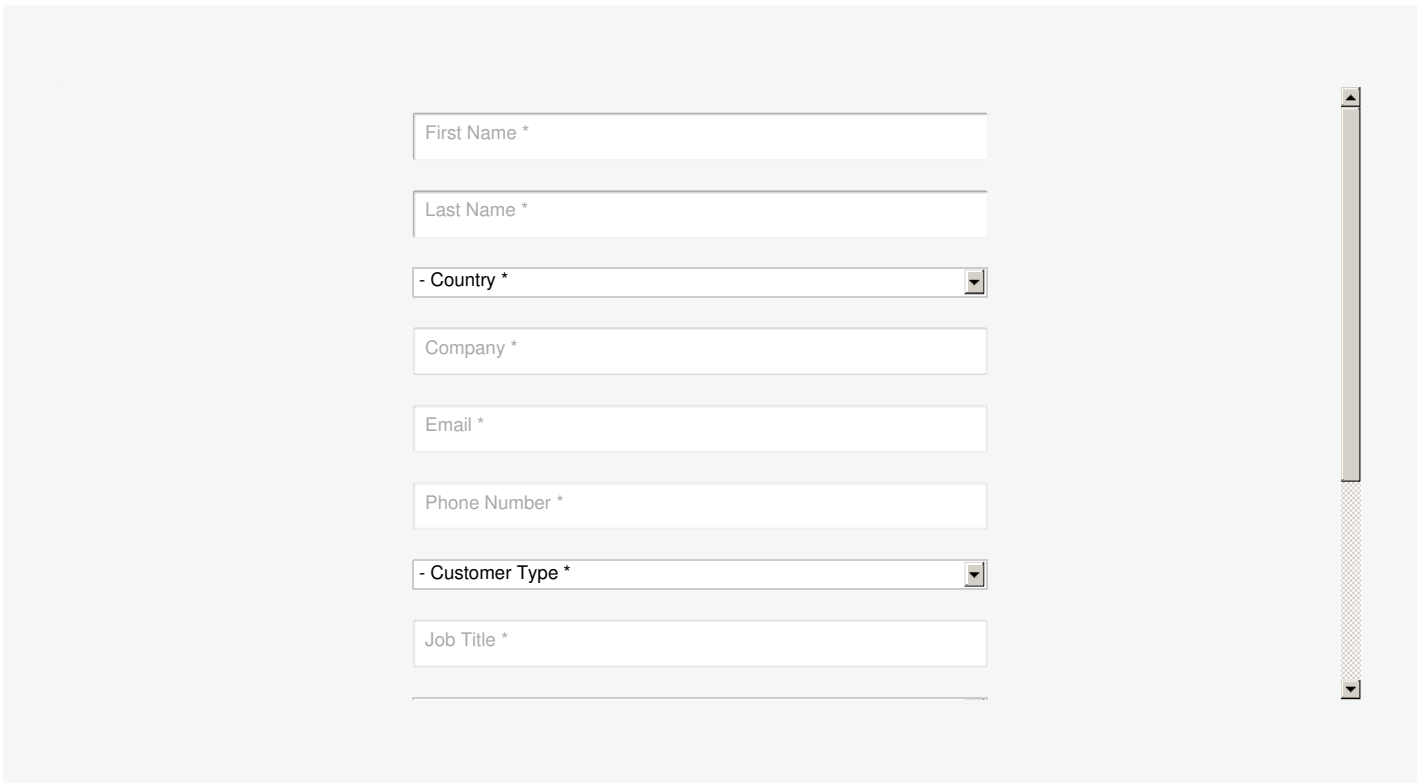
User Roles and Access Levels

Define User Roles and respective permission access levels on a room-by-room basis so that information can be accessed by relevant people only.



Talk to Our Experts

If you prefer to have ATEN contact you, please complete the form and a representative will be in touch with you shortly



The image shows a user registration form with the following fields:

- First Name *
- Last Name *
- Country *
- Company *
- Email *
- Phone Number *
- Customer Type *
- Job Title *

Features

ATEN Unizon™ is a server-based software for remote centralized monitoring, control, and management of Ethernet-based ATEN Video Matrix Switches, ATEN Room Booking System, and 3rd party devices (such as projectors, lights, and AV devices) connected to ATEN Control System Controllers.

By providing real-time access to device status, the platform streamlines daily AV/IT management, troubleshooting, analytics, and automation, making it the perfect solution to manage mass device deployments.

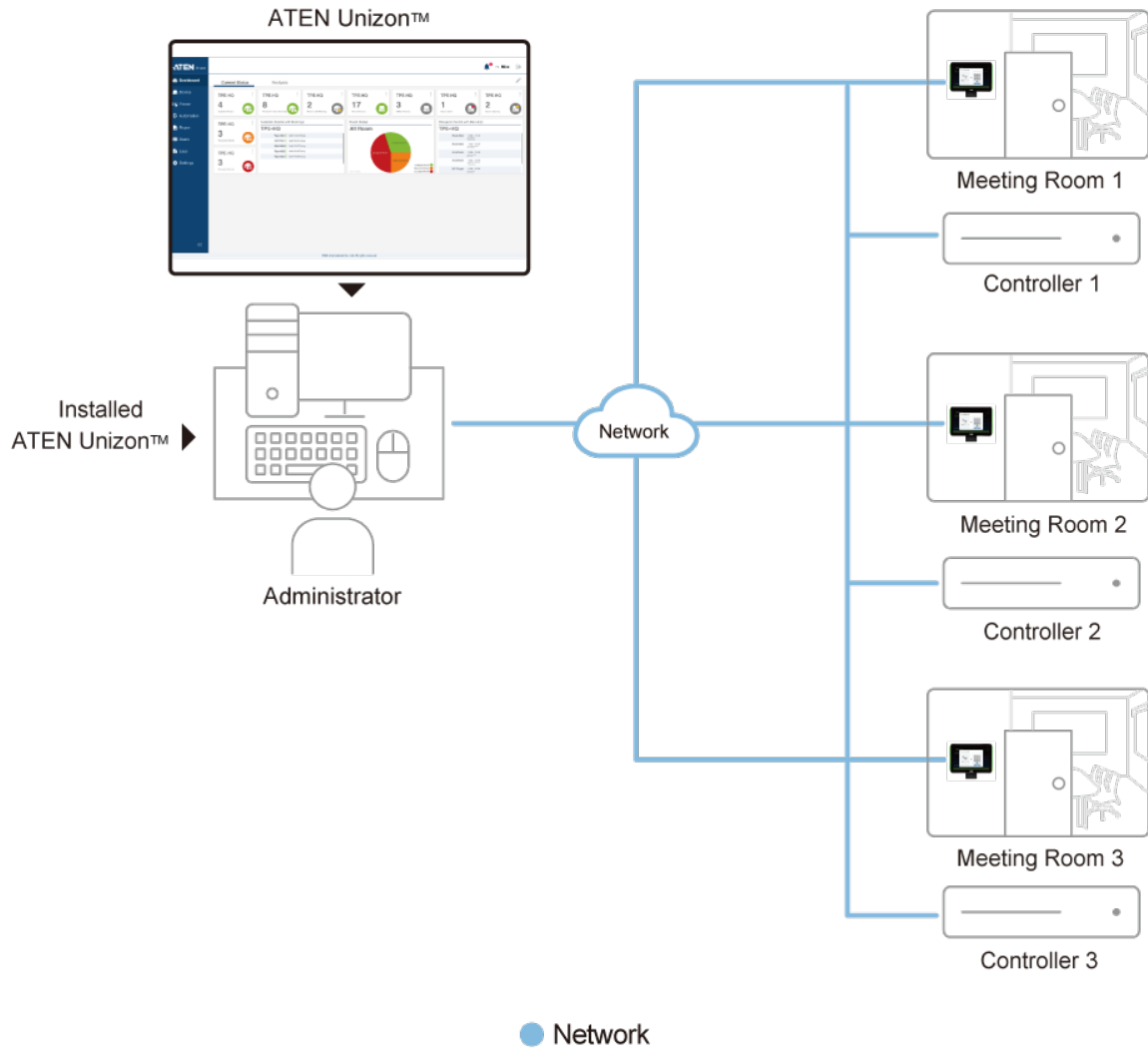
ATEN Unizon Timetable enables calendar syncing in real-time with RBS panels allows users to create /upload events on ATEN Unizon, streamlining the entire process of managing meeting spaces within an organization. User profiles are manageable via the RBS Panel-connected [VK401](#), enabling ATEN Unizon to restrict access rights only to the authorized person. Besides, by integrating with VK control system, ATNE Unizon allows for facilitating conference room automation solutions.

- Centralized device monitoring, control, and management
 - ATEN Video Matrix Switches, Room Booking System, Control System solutions, including the managed third-party devices
 - Detection of device statuses, such as lamp hour of a projector and connection status for remote troubleshooting and maintenance
 - Batch device control and firmware upgrades
- Intuitive user interface for large-scale Pro AV applications, easy room monitoring and management across multiple locations
 - 5-level deployment tree
 - Supports room view and floor view
 - Configurable users access rights
- Predefined scenarios for automation and task scheduling
 - Provide meeting scenarios to choose and triggers actions from controllers
 - Automatically turn on / off lights, air-con, meeting room devices based on predefined actions
- Dashboard for current status and analytics
 - Current status info for real-time troubleshooting
 - Analytics of past usage records for future optimization
 - Preset rules for generating regular reports for optimizing device maintenance arrangement
- User profiles are managed in the Directory, including user name, email, pin code and card numbers etc
- Logs device usage, notifications, and emails for abnormal events for usability analysis and future optimization
- ATEN Unizon Timetable allows for calendar syncing in real-time with RBS panels to users to create / upload multiple events in one time on ATEN Unizon
- Supports mainstream web browsers
- License of different amount of controlled devices can be purchased based on users' need

Specifications

Processor	3.2GHz
OS Support	Windows 8 (32/64 bit) and above
Storage Capacity	10 GB available hard disk space
System Memory	8 GB
Web Browser	Internet Explorer v.11 or later Microsoft Edge v.79.0.309 or later Mozilla Firefox v.72.0 or later Google Chrome v.80.0 or later
License	
Activation	<ul style="list-style-type: none"> • UNIZON-BASIC (Number of Managed Devices: 50) • UNIZON-STD (Number of Managed Devices: 500)
Maintenance	<ul style="list-style-type: none"> • UNIZON-EXT1 (Supported Upgrade Durations for 1 Year) • UNIZON-EXT3 (Supported Upgrade Durations for 3 Year) • UNIZON-EXTLIFE (Supported Upgrade Durations for Lifetime)
Add-ons	<ul style="list-style-type: none"> • UNIZON-DEV10 (Additional 10 Devices for Management) • UNIZON-TIMETABLE (Timetable Feature Add-on)
Note	When no license is uploaded, upto 3 devices can be managed.

Diagram



ATEN International Co., Ltd.

3F., No.125, Sec. 2, Datong Rd., Sijhih District., New Taipei City 221, Taiwan
 Phone: 886-2-8692-6789 Fax: 886-2-8692-6767
 www.aten.com E-mail: marketing@aten.com



© Copyright 2015 ATEN® International Co., Ltd.
 ATEN and the ATEN logo are trademarks of ATEN International Co., Ltd.
 All rights reserved. All other trademarks are the property of their respective owners.